



Shown: The Devonshire I



The Devonshire

The European Collection

The Devonshire is a bold, European inspired floor plan with 3 Bedrooms, 2.5 Baths and a Study, comfortably nestled within a generous 2,667 square feet. The Kitchen and Entertaining Island are positioned perfectly to make the most of entertaining opportunities and mingle space with the roomy Great Room. The Great Room flows seamlessly to the Screen Loggia through expansive 12' telescoping doors, allowing for an easy transition from outdoor to indoor entertaining. The split floor plan provides exceptional serenity in the Master Suite. The Master Suite features his and her closets, coffered ceilings and a Master Bath you may not want to ever leave. The Master Bath features a walk-in shower, large soaking tub, dual vanities and convenient access to the Laundry.



The Devonshire I



The Devonshire II

KENT *select*
A SMARTER WAY TO A LUXURY HOME



Visit our Design Center today at 1721 Allens Lane, Suite 202, Wilmington, NC 28403
toll free 877 256 5313 p 910 256 5313 f 910 256 5302 www.kentselect.com

© 2009 Kent Homes



The Devonshire Series of Homes

Two distinct home styles in our European Collection



The Devonshire I



The Devonshire II

KENT *select*
A SMARTER WAY TO A LUXURY HOME

square footage - standard

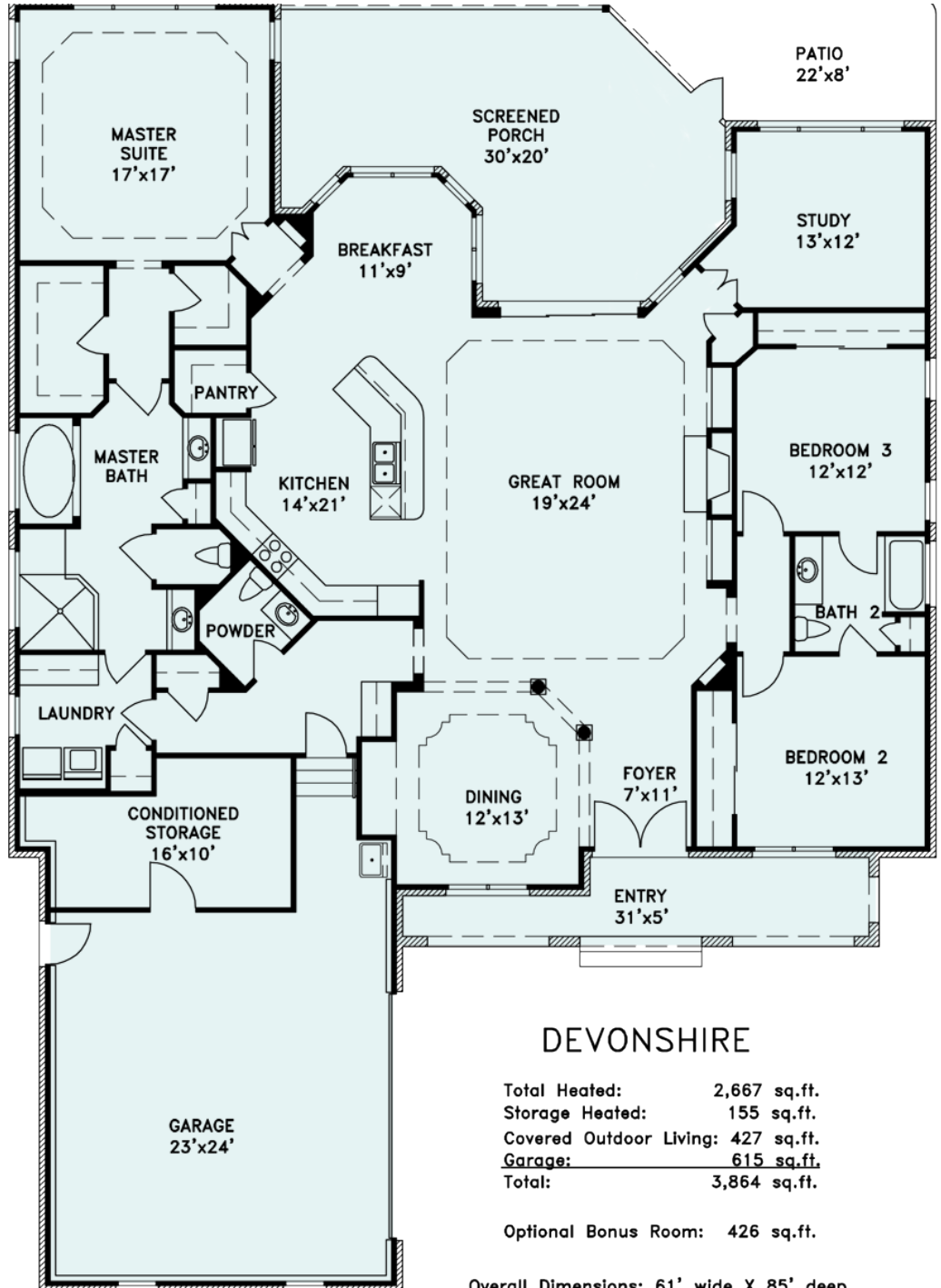
total heated: 2,667 sq.ft.
storage heated: 155 sq.ft.
covered outdoor living: 427 sq.ft.
garage: 615 sq.ft.

total 3,864 sq.ft.

optional bonus room: 426 sq.ft.

overall dimensions

61' width X 85' depth

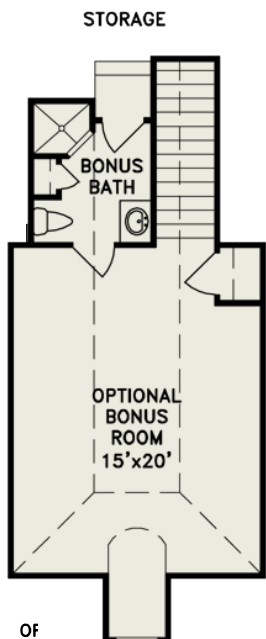


DEVONSHIRE

Total Heated: 2,667 sq.ft.
Storage Heated: 155 sq.ft.
Covered Outdoor Living: 427 sq.ft.
Garage: 615 sq.ft.
Total: 3,864 sq.ft.

Optional Bonus Room: 426 sq.ft.

Overall Dimensions: 61' wide X 85' deep



OF
OPTIONAL BONUS and BATH