

Coastal Traditional Collection
Edisto Island Series of Homes



Shown: Edisto Island II



Edisto Island Series of Homes
Coastal Traditional Collection

The perfect setting for a Southern novel, Edisto Island, S.C. is the kind of place where shrimp boats are tied up and sea breezes run free. On the short drive south out of Charleston, you'll be charmed by the sights of working farms, antebellum plantations and old country churches. Low-slung ancient live oaks dripping in Spanish moss create a canopy over the town's quiet streets, and many of the homes are on the National Register of Historic Places. Our namesake design is intended to be a fitting complement to the region's architectural heritage. Y'all come see for yourself.



Edisto Island I



Edisto Island II

KENT *select*
A SMARTER WAY TO A LUXURY HOME



Visit our Design Center today at 1721 Allens Lane, Suite 202, Wilmington, NC 28403
toll free 877 256 5313 p 910 256 5313 f 910 256 5302 www.kentselect.com



Edisto Island Series of Homes

Two distinct home styles in our Coastal Traditional Collection



Edisto Island I



Edisto Island II

KENT *select*
A SMARTER WAY TO A LUXURY HOME

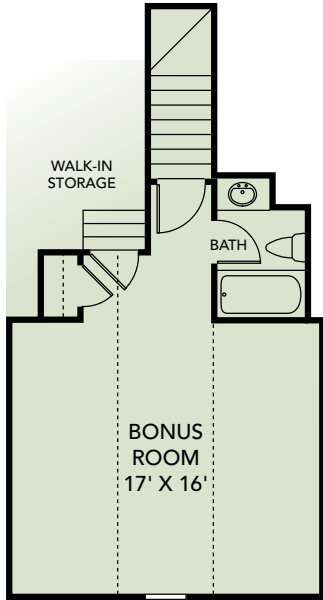
square footage - standard

total heated:	2,026 sq.ft.
covered outdoor living:	404 sq.ft.
garage:	631 sq.ft.
storage (walk-in):	72 sq.ft.

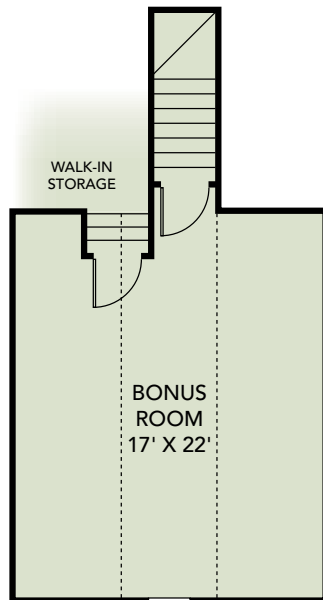
total 3,133 sq.ft.

overall dimensions

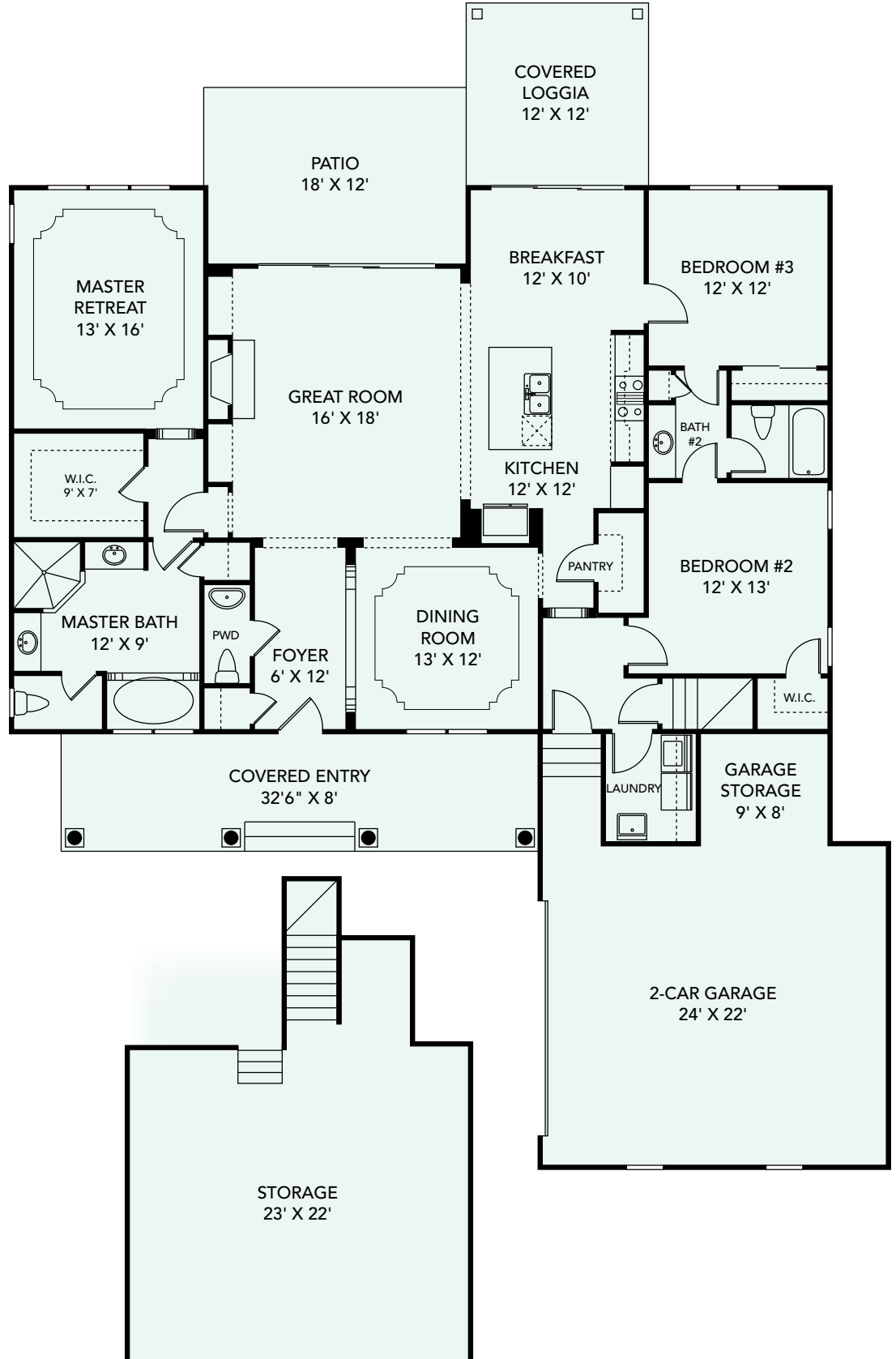
60' width X 79'5" depth



total heated: 323 sq.ft.



total heated: 374 sq.ft.



These drawings and square-footage notations are approximate and are only to be used for reference. They should not be relied upon as representations, expressed or implied, of the final detail of the residence.

