

Balboa Island Series of Homes
Coastal Traditional Collection



Shown: Balboa Island II



Balboa Island Series of Homes
Coastal Traditional Collection

With its numerous front porches, flower and vegetable gardens, and shingle or siding exteriors, Balboa Island, California, seems to represent the quintessential seaside community. Like many beach towns on the Atlantic coast, Balboa Island was once a summer home destination that has matured into a year-round residential community. House styles reflect summer's easy living and classic cottage architecture, but have fully updated interiors. These plans are their Carolina cousins.



Balboa Island I



Balboa Island II

KENT *select*
A SMARTER WAY TO A LUXURY HOME



Visit our Design Center today at 1721 Allens Lane, Suite 202, Wilmington, NC 28403
toll free 877 256 5313 p 910 256 5313 f 910 256 5302 www.kentselect.com



Balboa Island Series of Homes

Two distinct home styles in our Coastal Traditional Collection



Balboa Island I



Balboa Island II

KENT *select*
A SMARTER WAY TO A LUXURY HOME

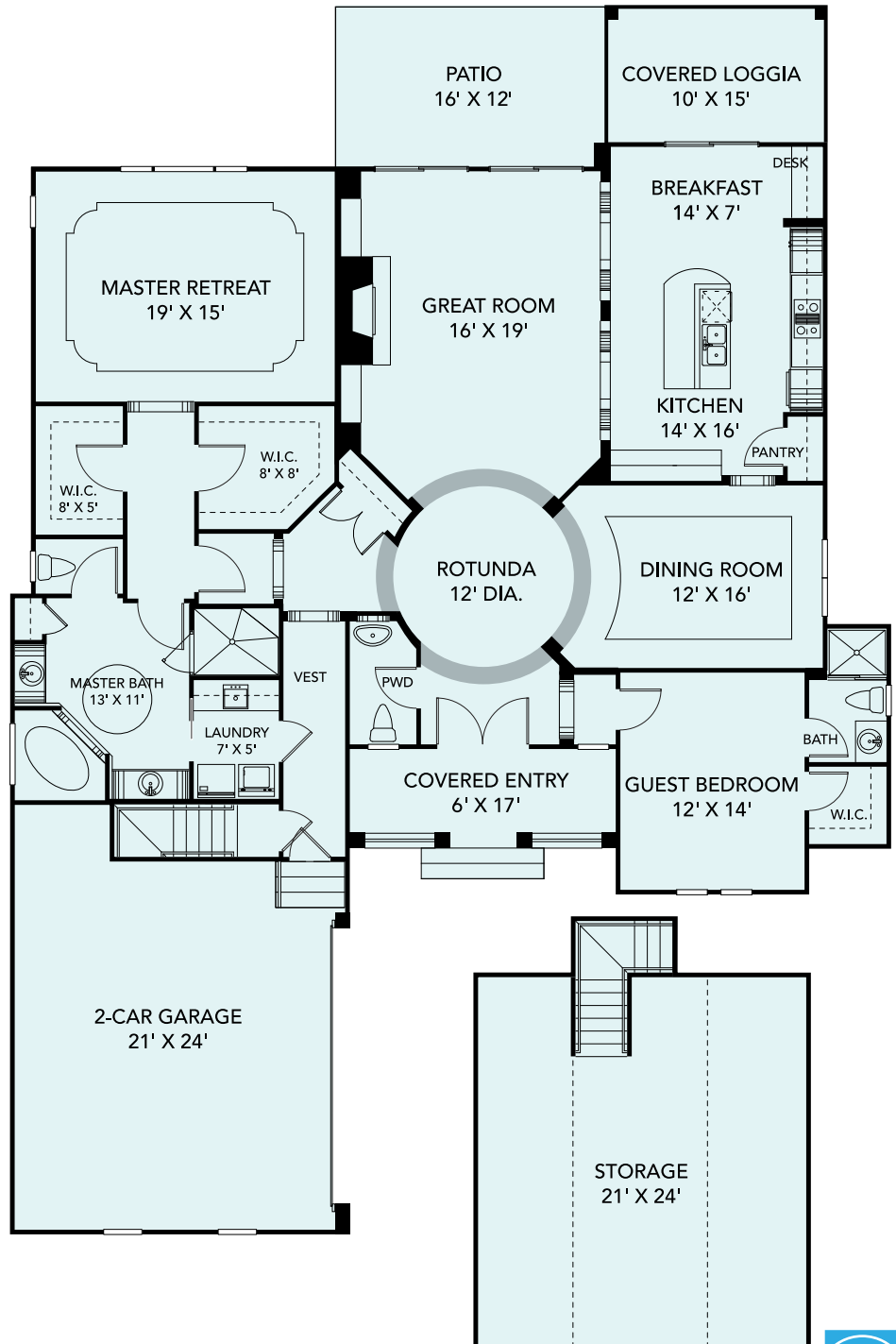
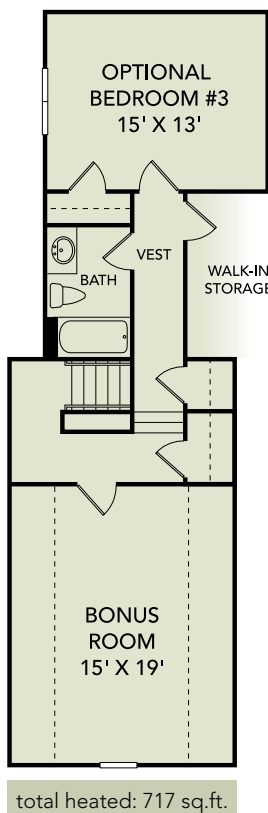
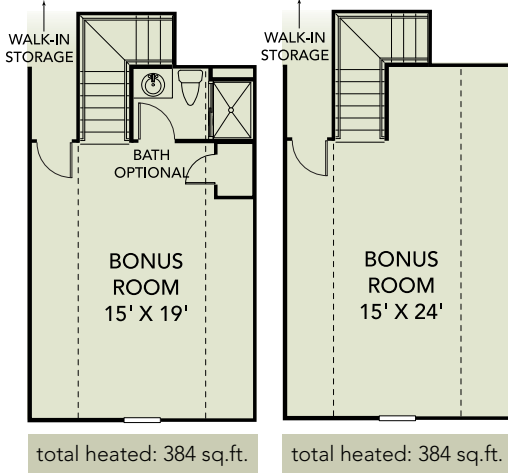
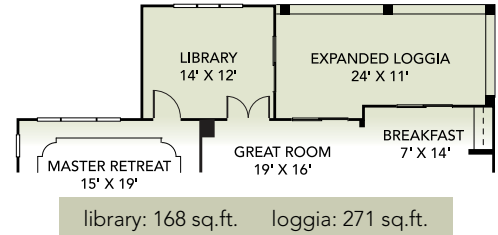
square footage - standard

total heated:	2,340 sq.ft.
covered outdoor living:	279 sq.ft.
garage:	578 sq.ft.
storage (walk-in):	504 sq.ft.

total 3,701 sq.ft.

overall dimensions

57'6" width X 83'6" depth



These drawings and square-footage notations are approximate and are only to be used for reference. They should not be relied upon as representations, expressed or implied, of the final detail of the residence.

